

Floppy Formatter Manual

Copyright © 2000 Kenny Graunke

Copyright © 2002 John Fleck

Copyright © 2003 Baris Cicek

Permission is granted to copy, distribute and/or modify this document under the terms of the GNU Free Documentation License (GFDL), Version 1.1 or any later version published by the Free Software Foundation with no Invariant Sections, no Front-Cover Texts, and no Back-Cover Texts. You can find a copy of the GFDL at this [link](#) or in the file COPYING-DOCS distributed with this manual.

This manual is part of a collection of GNOME manuals distributed under the GFDL. If you want to distribute this manual separately from the collection, you can do so by adding a copy of the license to the manual, as described in section 6 of the license.

Many of the names used by companies to distinguish their products and services are claimed as trademarks. Where those names appear in any GNOME documentation, and the members of the GNOME Documentation Project are made aware of those trademarks, then the names are in capital letters or initial capital letters.

DOCUMENT AND MODIFIED VERSIONS OF THE DOCUMENT ARE PROVIDED UNDER THE TERMS OF THE GNU FREE DOCUMENTATION LICENSE WITH THE FURTHER UNDERSTANDING THAT:

1. DOCUMENT IS PROVIDED ON AN "AS IS" BASIS, WITHOUT WARRANTY OF ANY KIND, EITHER EXPRESSED OR IMPLIED, INCLUDING, WITHOUT LIMITATION, WARRANTIES THAT THE DOCUMENT OR MODIFIED VERSION OF THE DOCUMENT IS FREE OF DEFECTS MERCHANTABLE, FIT FOR A PARTICULAR PURPOSE OR NON-INFRINGEMENT. THE ENTIRE RISK AS TO THE QUALITY, ACCURACY, AND PERFORMANCE OF THE DOCUMENT OR MODIFIED VERSION OF THE DOCUMENT IS WITH YOU. SHOULD ANY DOCUMENT OR MODIFIED VERSION PROVE DEFECTIVE IN ANY RESPECT, YOU (NOT THE INITIAL WRITER, AUTHOR OR ANY CONTRIBUTOR) ASSUME THE COST OF ANY NECESSARY SERVICING, REPAIR OR CORRECTION. THIS DISCLAIMER OF WARRANTY CONSTITUTES AN ESSENTIAL PART OF THIS LICENSE. NO USE OF ANY DOCUMENT OR MODIFIED VERSION OF THE DOCUMENT IS AUTHORIZED HEREUNDER EXCEPT UNDER THIS DISCLAIMER; AND
2. UNDER NO CIRCUMSTANCES AND UNDER NO LEGAL THEORY, WHETHER IN TORT (INCLUDING NEGLIGENCE), CONTRACT, OR OTHERWISE, SHALL THE AUTHOR, INITIAL WRITER, ANY CONTRIBUTOR, OR ANY DISTRIBUTOR OF THE DOCUMENT OR MODIFIED VERSION OF THE DOCUMENT, OR ANY SUPPLIER OF ANY OF SUCH PARTIES, BE LIABLE TO ANY PERSON FOR ANY DIRECT, INDIRECT, SPECIAL, INCIDENTAL, OR CONSEQUENTIAL DAMAGES OF ANY CHARACTER INCLUDING, WITHOUT LIMITATION, DAMAGES FOR LOSS OF GOODWILL, WORK STOPPAGE, COMPUTER FAILURE OR MALFUNCTION, OR ANY AND ALL OTHER DAMAGES OR LOSSES ARISING OUT OF OR RELATING TO USE OF THE DOCUMENT AND MODIFIED VERSIONS OF THE DOCUMENT, EVEN IF SUCH PARTY SHALL HAVE BEEN INFORMED OF THE POSSIBILITY OF SUCH DAMAGES.

Feedback

To report a bug or make a suggestion regarding the Gfloppy application or this manual, follow the directions in the [GNOME Feedback Page](#).

COLLABORATORS

	<i>TITLE :</i> Floppy Formatter Manual		
<i>ACTION</i>	<i>NAME</i>	<i>DATE</i>	<i>SIGNATURE</i>
WRITTEN BY	Baris Cicek, John Fleck, and Kenny Graunke	May 27, 2009	

REVISION HISTORY

NUMBER	DATE	DESCRIPTION	NAME
Gfloppy Manual V2.1	January 2003	Baris Cicek bcicek@phreaker.net GNOME Documentation Project	
Gfloppy Manual V4.0	June 2002	John Fleck jfleck@inkstain.net GNOME Documentation Project	
Gfloppy Manual	2000	Kenny Graunke GNOME Documentation Project	

Contents

1	Introduction	1
2	Use of GFloppy	1
3	Troubleshooting	2
4	Known Bugs and Limitations	2
5	Authors	2
6	License	3

List of Figures

1	Gfloppy Main Window	1
---	-------------------------------	---

Abstract

Floppy Formatter, also known as Gfloppy, formats floppy disks for use in Linux.

1 Introduction

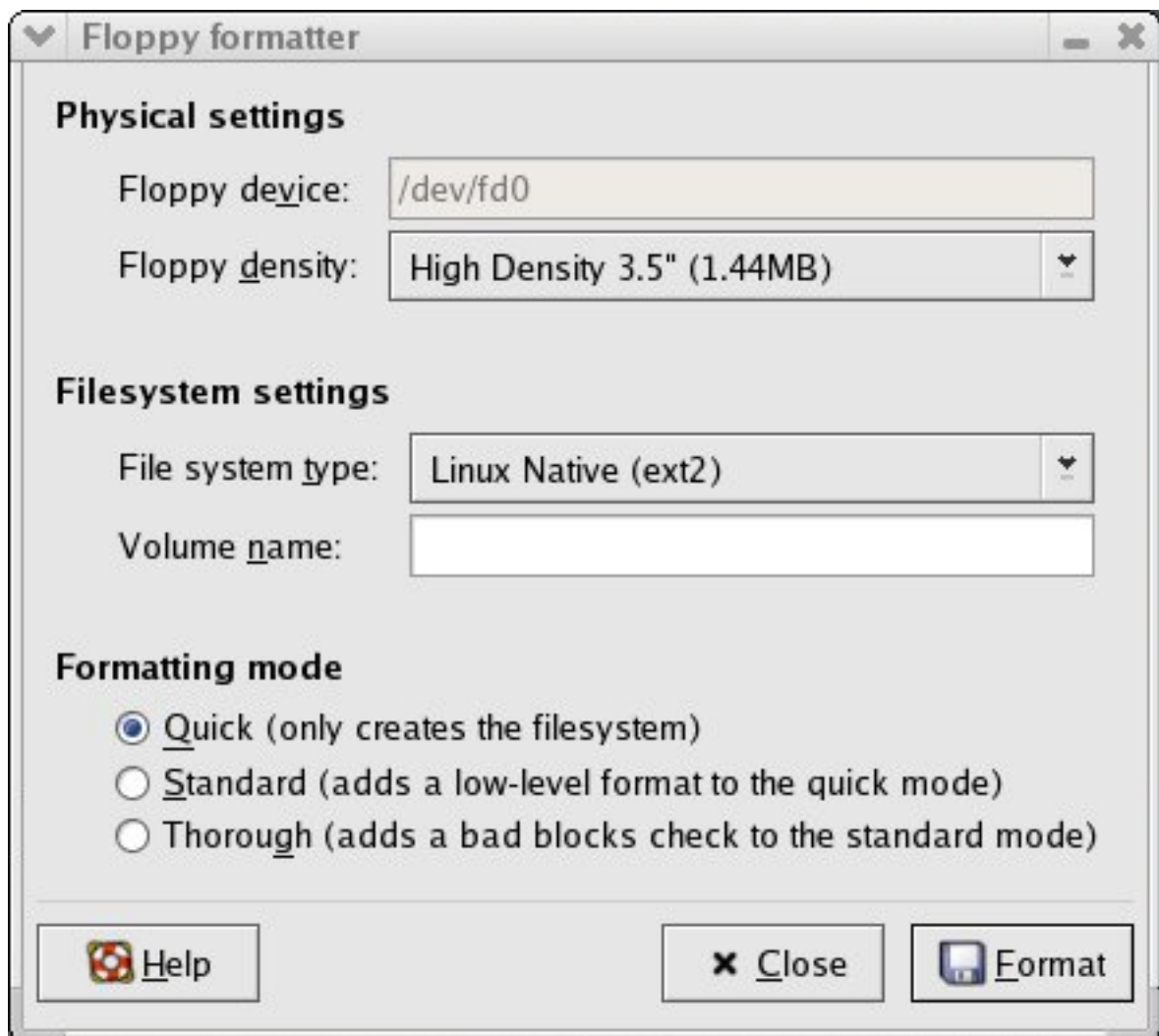
GFloppy formats floppy disks for Linux. New floppy disks might need to be formatted before they can be used.

To run GFloppy, select Floppy Formatter from the System Tools submenu of the Main Menu, or type **gfloppy** on the command line.

This document describes version 2.4 of GFloppy.

2 Use of GFloppy

When you start GFloppy, the Main window opens, shown in Figure 1.



GFloppy Main Window

Figure 1: Gfloppy Main Window

Insert a floppy disk that is not write-protected.

Warning

GFloppy will destroy all files on your floppy disk. Do not format floppies containing files you wish to keep.

GFloppy needs to know the density of your floppy disk, the amount of data it can hold. Most disks today are High Density, 1.44MB 3.5".

Select your file system type. If you need to use your floppy under DOS or Windows, choose DOS (FAT). Otherwise, choose Linux Native (ext2). Linux Native cannot be read on most non-Linux machines.

You can also give Volume name to your newly formatted floppies. To do this type your label in the text box under Filesystem Settings.

Finally, you should select the mode of your formatting.

Quick Quick format is fastest but does not check your floppy for bad "blocks". It just deletes the file table so your data is theoretically recoverable.

Standard Standard format is a low-level format, but it does not check bad blocks. Thus if you have a faulty floppy it will fail to format.

Thorough Thorough format checks floppy for bad blocks and low-level format it.

Click on the Format button to start formatting your floppy disk, as shown in these figures.

You will see a series of dialogs informing you that Gfloppy is formatting, verifying and making a filesystem on your disk.

Unless you select Quick Format or Standard, GFloppy checks for bad "blocks" on your floppy. If GFloppy finds any, your floppy is wearing out.

GFloppy will let you know if it was successful and it will return you to the main window.

3 Troubleshooting

When no floppy disk is inserted, GFloppy displays a dialog informing you that there's no media to be formatted.

If your disk is write protected, GFloppy will warn you as well. To un-write protect your floppy, eject it and turn it over. Standard 3.5 inch floppies have a small black tab in the upper-left corner. Slide it down so it covers the hole. If the floppy does not have a black tab, it is permanently write protected.

4 Known Bugs and Limitations

GFloppy only works on Linux.

5 Authors

GFloppy was written by Jonathan Blandford (jrb@redhat.com). Please send all comments, suggestions, and bug reports to the [GNOME bug tracking database](#). If you are using GNOME 1.1 or later, you can also use Bug Report Tool (**bug-buddy**), available in the Programming submenu of Main Menu, for submitting bug reports.

This manual was written by Baris Cicek (bcicek@phreaker.net). Please send all comments and suggestions regarding this manual to the [GNOME Documentation Project](#) by sending an email to docs@gnome.org. You can also add your comments online by using the [GNOME Documentation Status Table](#).

6 License

This program is free software; you can redistribute it and/or modify it under the terms of the [GNU General Public License](#) as published by the Free Software Foundation; either version 2 of the License, or (at your option) any later version.

This program is distributed in the hope that it will be useful, but WITHOUT ANY WARRANTY; without even the implied warranty of MERCHANTABILITY or FITNESS FOR A PARTICULAR PURPOSE. See the [GNU General Public License](#) for more details.

A copy of the *GNU General Public License* is included as an appendix to the *GNOME Users Guide*. You may also obtain a copy of the *GNU General Public License* from the Free Software Foundation by visiting [their Web site](#) or by writing to

Free Software Foundation, Inc. 59 Temple Place - Suite 330 Boston, MA02111-1307USA
